

BinSentry: Real time visibility that allows you to see – and fix – slide issues.

Here's how:

- We use a combination of best-in-class sensors and proprietary software to monitor bins in real time, including how bins are being managed.
- We can alert your staff to out-of-feed problems, or issues that are about to occur, so that problems can be corrected immediately before impacting feed conversion ratios.
- We provide analytics that can help manage out-of-feed events – both from slide management and empty bins – on an ongoing basis.

The payoff: Healthier animals, better FCR

Our technology can help you see improvements in feed conversion ratios **by up to 10 basis points** by:

- Optimizing your feed management to ensure that your producers don't allow animals to go without feed – whether from actual feed outages or slide management mistakes.
- Using real time data to pinpoint and address your worst-performing barns, which in most cases have significant slide management issues.



Want to learn more?

Speak with one of our experts about how BinSentry can help improve your feed management, minimize out-of-feed events, and boost your conversion ratios.



For more information or to book a demo:

✉ sales@binsentry.com ☎ +1 (226) 910 -1110 🌐 www.binsentry.com



Exploring the connection between out-of-feed events and FCR.

We all know how important feed conversion ratios (FCR) are. The higher your FCR, the less profit you're making on each animal in an industry with historically tight margins.

Feed is, without question, your operation's biggest expense. Animals require a constant supply of feed to reach their peak performance and productivity.

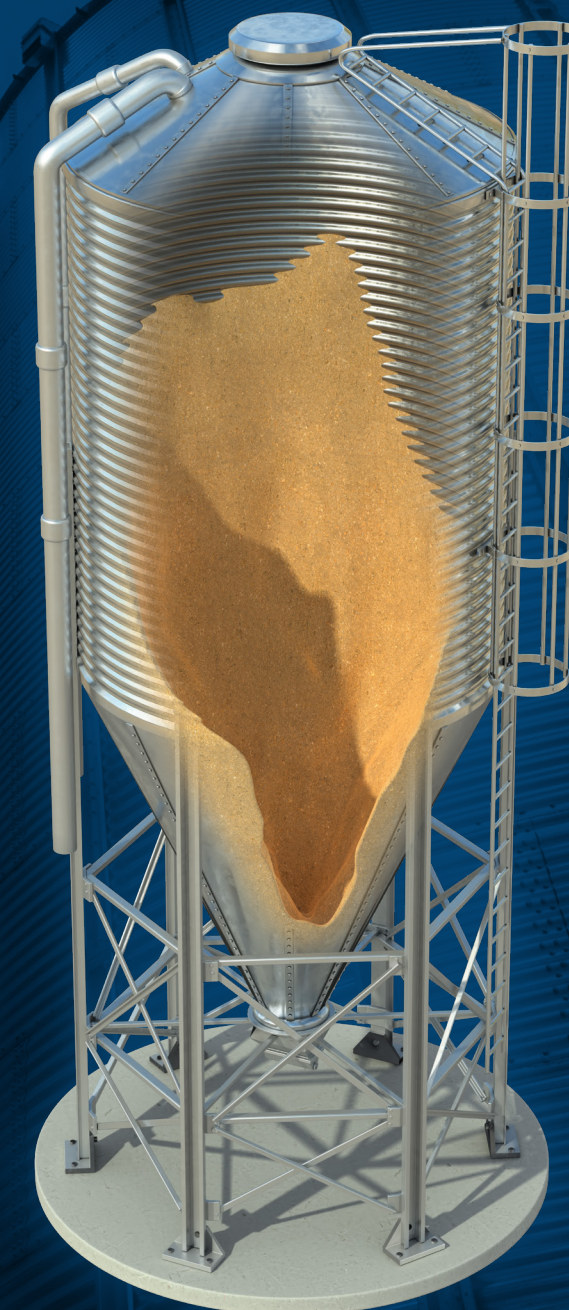
Logically, you would think that whenever out-of-feed events happen, FCR would be directly impacted.

However, to date, there has never been a clear or strong correlation between feed outages and feed conversion ratios.

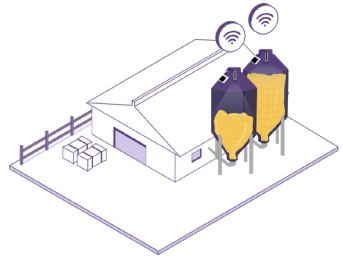
Why? Let's dig in.

First - when we think about out-of-feed events, we automatically assume it means not having any feed on site. Let's call these events "empty bin outages."

When we look at empty bin outages across an entire operation, we see that barns with the highest outages don't always have the worst FCR numbers. **There's a clear disconnect that doesn't add up.**



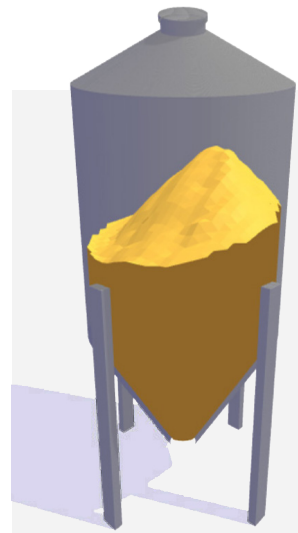
Uncovering a new source of out-of-feed events.



By monitoring more than **20,000 bins** for out-of-feed events in swine and poultry operations across North America, we have uncovered a new source of out-of-feed events: Slide management.

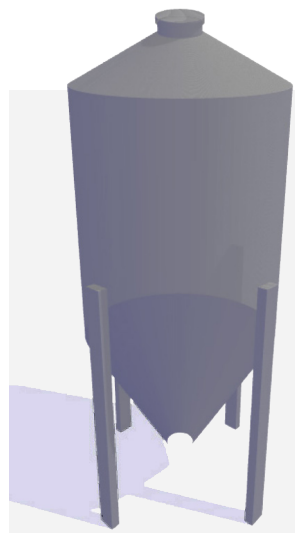
In other words, employees are making mistakes in managing manual feed bin slides – leaving slides closed, so that feed is not accessible to animals.

Out-of-feed events happen far more often than you think.



80%

Mistakes in managing manual feed bin slides – i.e. leaving slides closed – account for nearly **80% of all out-of-feed events.**



20%

Only 20% of all feed outages are caused by actually running out of feed on site i.e. empty bin events.

Three key takeaways:

1. Most of the time when animals don't have access to feed, there is **actually** feed on site, but the slide simply wasn't opened to allow the feed in the bin to reach the animals in the barn.
2. Feed outage hours, or the time in which animals are without feed, are massively under-reported.
3. If you aren't tracking all categories of out-of-feed events (slide management and empty bin), **you're missing up to 80% of outages.**

Now that we can measure out-of-feed events caused by poor slide management, we can clearly see a significant and measurable impact on feed conversion ratios (FCR) as well as overall operational efficiency.

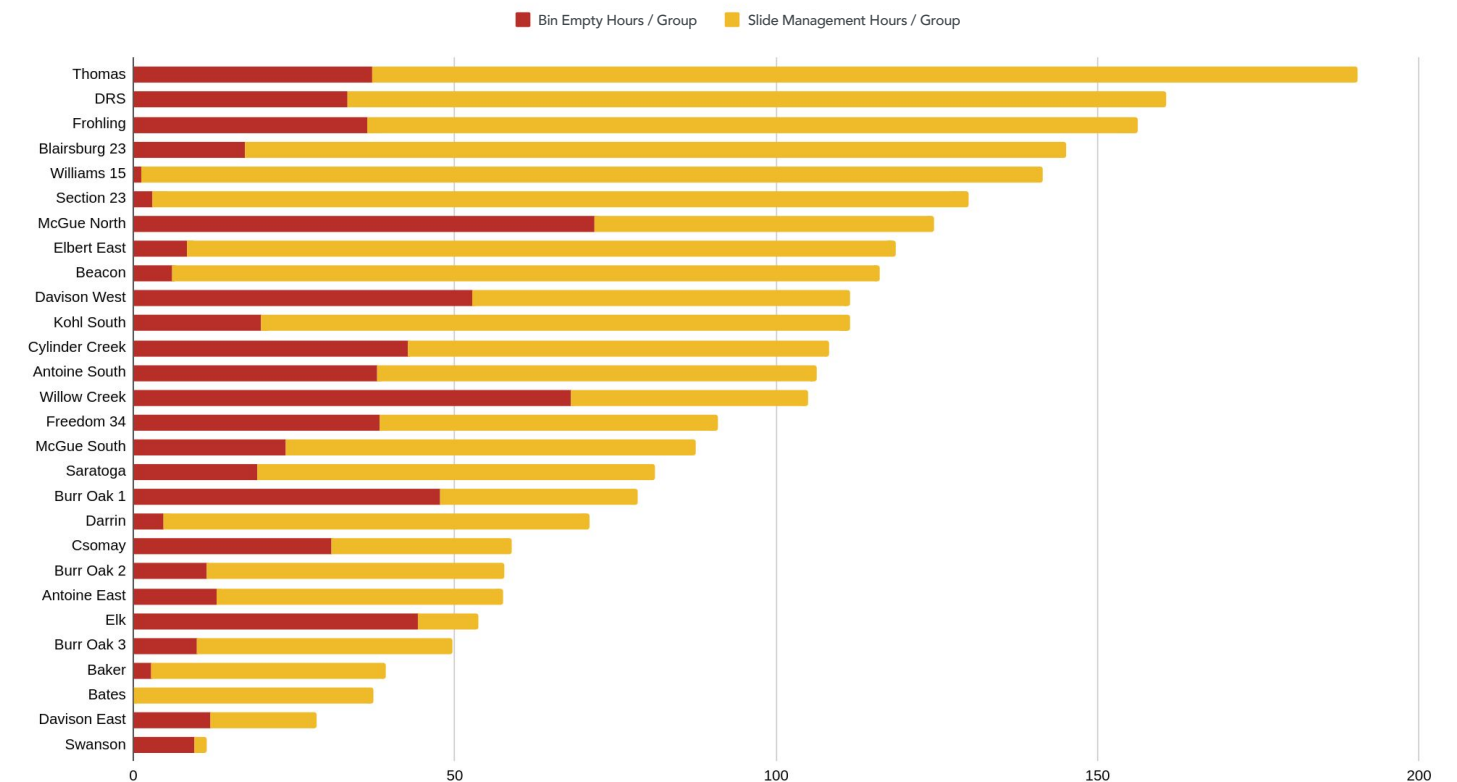
This is game-changing information

Until today, we had no way of monitoring and measuring just how much of a problem bin slide management is on a daily or even hourly basis.

After all – you can only manage what you can see. The industry hasn't been able to see that **up to 80% of their out-of-feed events are being caused by bin slide management issues.**

Combined Out-Of-Feed Hours by Site

Sites by Average Cumulative Out-of-Feed Hours per Group



Here's an example from just one BinSentry user. Looking at **28 different hog production sites over a 12-month period**, we can see that the vast majority of feed outage hours (where animals do not have access to feed) were caused by slide management.

